

BRAZILIAN INDUSTRY INNOVATION SUMMIT

INVESTMENT IN SCIENCE AND TECHNOLOGY AS A DEVELOPMENT STRATEGY

PAUL KEARNS

Laboratory Director
Argonne National Laboratory

An aerial photograph of the Argonne National Laboratory campus. The image shows a large, circular, multi-story building complex in the center-right, surrounded by lush green trees and lawns. Several smaller buildings and parking lots are visible in the background. The overall scene is a mix of modern architecture and natural landscape.

Argonne
NATIONAL LABORATORY

INVESTING IN RESEARCH AND DEVELOPMENT

1,590+ S&T Staff

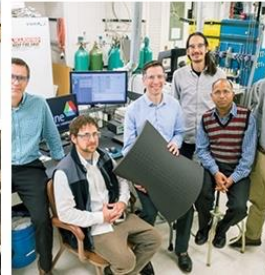
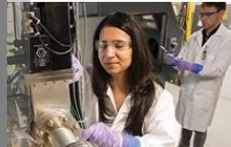
7,900+
Facility Users

1,600+ Visiting
Researchers

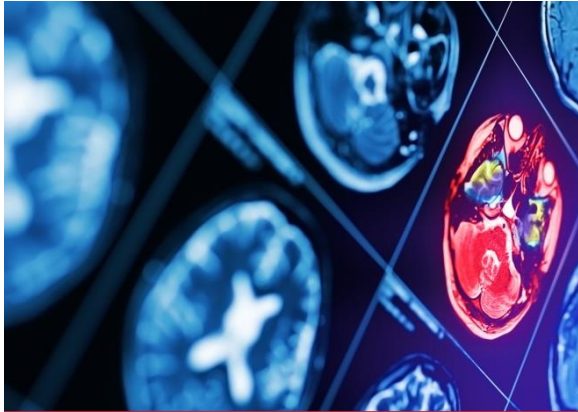
3,200+ Employees

340+ Joint Faculty

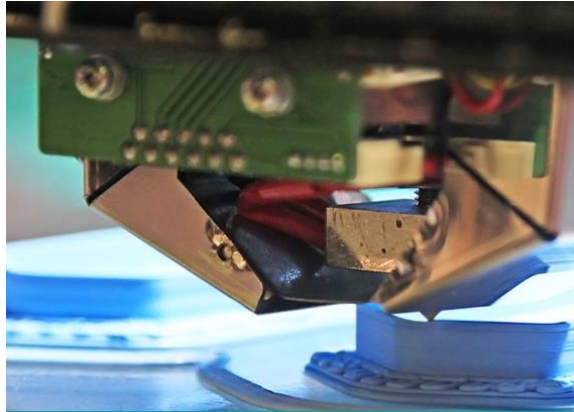
550+ Students



THE IMPORTANCE OF CONSISTENT FUNDING



HEALTH



COMPETITIVENESS



NATIONAL SECURITY

RESEARCH OUTCOMES DRIVE ECONOMIC IMPACTS

